

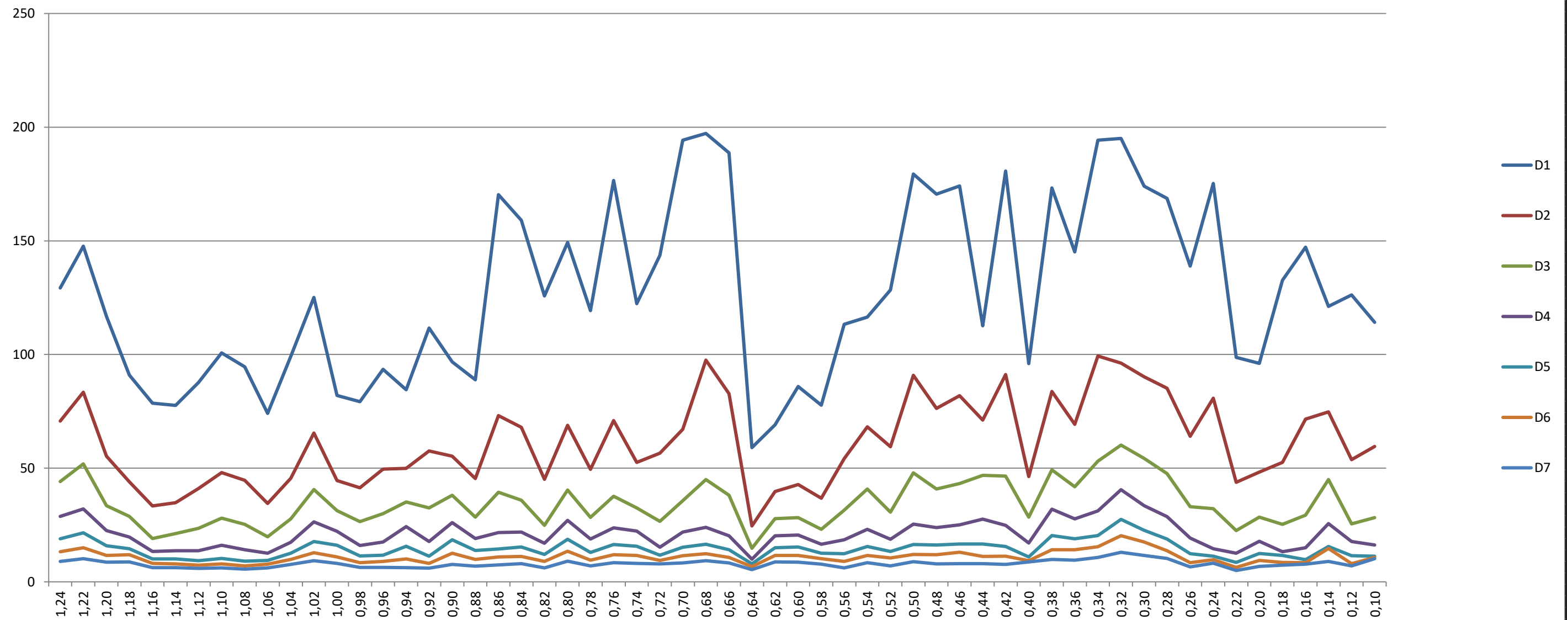
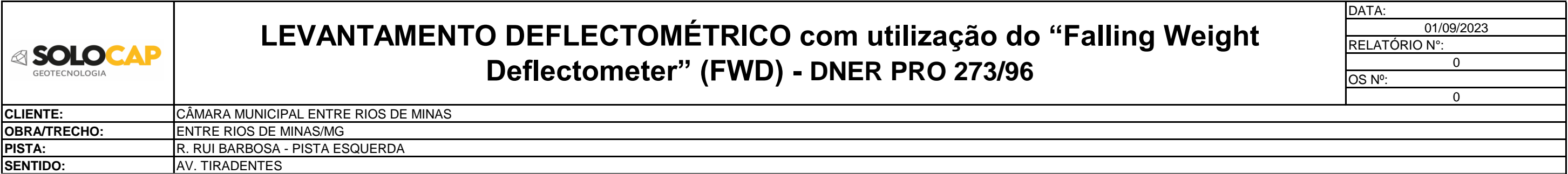


<div><div>SOLOCAP</div><div>GEOTECNOLOGIA</div></div>			LEVANTAMENTO DEFLECTOMÉTRICO com utilização do “Falling Weight Deflectometer” (FWD) Modelo TBTFWD-NJ-MV - DNER PRO 273/96												ANEXO Nº 18.1-R-10-PE		
															DATA: 04/09/2023		
															RELATÓRIO Nº: 660-401000/23		
															OS Nº: 660/23		
CLIENTE:			CÂMARA MUNICIPAL ENTRE RIOS DE MINAS														
OBRA/TRECHO:			ENTRE RIOS DE MINAS/MG														
PISTA:			R. RUI BARBOSA - PISTA ESQUERDA														
SENTIDO:			AV. TIRADENTES														
KM	Target Load kN	Target Load (Kgf)	UNIDADE DAS LEITURAS (x10 ⁻² mm)							Temp (°C)		Coordenadas		RAIO	Data e Hora	Obs.	
			D1	D2	D3	D4	D5	D6	D7	Ar	Pav.	Latitude	Longitude				
1,24	40,7	4.150	129	71	44	29	19	13	9	35.0	45.2	-20,67440	-44,07757	44	31/08/2023 13:17		
1,22	41,8	4.262	148	83	52	32	22	15	10	34.9	45.3	-20,67419	-44,07754	39	31/08/2023 13:18		
1,20	42,1	4.293	117	55	33	23	16	12	9	35.0	46.9	-20,67402	-44,07751	43	31/08/2023 13:19		
1,18	42,6	4.344	91	44	29	20	15	12	9	35.1	45.0	-20,67383	-44,07748	57	31/08/2023 13:19		
1,16	40,6	4.140	79	33	19	13	10	8	6	35.1	45.9	-20,67363	-44,07745	60	31/08/2023 13:20		
1,14	40,4	4.120	78	35	21	14	10	8	6	35.2	44.6	-20,67345	-44,07743	63	31/08/2023 13:20		
1,12	42,4	4.324	88	41	24	14	9	7	6	35.4	46.5	-20,67324	-44,07739	56	31/08/2023 13:21		
1,10	42,5	4.334	101	48	28	16	10	8	6	35.5	46.0	-20,67306	-44,07737	50	31/08/2023 13:22		
1,08	39,9	4.069	95	45	25	14	9	7	6	35.4	46.8	-20,67288	-44,07735	52	31/08/2023 13:22		
1,06	42,0	4.283	74	34	20	13	9	8	6	35.5	47.2	-20,67270	-44,07733	67	31/08/2023 13:23		
1,04	40,7	4.150	99	46	28	17	13	10	8	36.2	47.5	-20,67251	-44,07731	50	31/08/2023 13:23		
1,02	40,7	4.150	125	65	41	26	18	13	9	35.6	46.6	-20,67231	-44,07727	43	31/08/2023 13:24		
1,00	42,6	4.344	82	45	31	22	16	11	8	35.9	37.7	-20,67211	-44,07725	71	31/08/2023 13:25		
0,98	41,0	4.181	79	41	27	16	11	8	6	35.5	36.9	-20,67188	-44,07724	69	31/08/2023 13:25		
0,96	41,7	4.252	93	50	30	18	12	9	6	36.0	34.3	-20,67173	-44,07720	58	31/08/2023 13:26		
0,94	40,0	4.079	84	50	35	24	16	10	6	35.9	35.5	-20,67153	-44,07718	74	31/08/2023 13:27		
0,92	42,6	4.344	112	58	33	18	11	8	6	34.6	33.8	-20,67135	-44,07716	47	31/08/2023 13:27		
0,90	41,0	4.181	97	55	38	26	19	13	8	35.9	39.1	-20,67116	-44,07715	62	31/08/2023 13:28		
0,88	41,3	4.211	89	45	29	19	14	10	7	36.2	44.1	-20,67098	-44,07713	60	31/08/2023 13:28		
0,86	42,0	4.283	170	73	39	22	14	11	7	36.2	45.1	-20,67079	-44,07711	27	31/08/2023 13:29		
0,84	41,7	4.252	159	68	36	22	15	11	8	36.3	45.9	-20,67060	-44,07708	29	31/08/2023 13:30		
0,82	41,6	4.242	126	45	25	17	12	9	6	36.5	46.2	-20,67042	-44,07705	34	31/08/2023 13:30		
0,80	41,0	4.181	149	69	40	27	19	13	9	36.6	47.5	-20,67022	-44,07702	33	31/08/2023 13:31		
0,78	41,3	4.211	119	50	28	19	13	9	7	36.6	47.7	-20,67003	-44,07699	39	31/08/2023 13:31		
0,76	42,0	4.283	177	71	38	24	16	12	8	36.6	48.6	-20,66984	-44,07695	26	31/08/2023 13:32		
0,74	42,1	4.293	122	53	33	22	16	12	8	36.7	44.4	-20,66966	-44,07692	39	31/08/2023 13:33		
0,72	42,0	4.283	144	57	27	15	12	9	8	36.4	46.0	-20,66946	-44,07688	31	31/08/2023 13:33		
0,70	41,2	4.201	194	67	36	22	15	12	8	36.8	45.3	-20,66928	-44,07685	22	31/08/2023 13:34		
0,68	40,9	4.171	197	98	45	24	17	12	9	37.4	41.6	-20,66910	-44,07682	25	31/08/2023 13:35		
0,66	42,0	4.283	189	83	38	20	14	11	8	36.9	42.5	-20,66891	-44,07678	24	31/08/2023 13:35		
0,64	43,9	4.476	59	25	15	10	8	7	5	37.0	41.7	-20,66872	-44,07672	79	31/08/2023 13:36		
0,62	42,2	4.303	69	40	28	20	15	12	9	36.9	35.5	-20,66854	-44,07668	89	31/08/2023 13:36		
0,60	40,2	4.099	86	43	28	21	15	12	9	37.1	42.2	-20,66835	-44,07667	62	31/08/2023 13:37		
0,58	40,6	4.140	78	37	23	17	13	10	8	37.0	42.8	-20,66817	-44,07666	65	31/08/2023 13:38		
0,56	42,0	4.283	113	54	31	19	12	9	6	37.1	44.9	-20,66794	-44,07664	44	31/08/2023 13:38		
0,54	41,3	4.211	116	68	41	23	16	12	8	37.7	46.1	-20,66777	-44,07663	50	31/08/2023 13:39		
0,52	41,9	4.273	128	59	31	19	13	11	7	37.3	45.1	-20,66759	-44,07661	37	31/08/2023 13:40		
0,50	42,5	4.334	179	91	48	25	16	12	9	37.2	45.7	-20,66736	-44,07660	28	31/08/2023 13:40		
0,48	41,0	4.181	170	76	41	24	16	12	8	37.3	45.1	-20,66717	-44,07658	28	31/08/2023 13:41		
0,46	41,5	4.232	174	82	43	25	17	13	8	37.4	45.9	-20,66702	-44,07657	28	31/08/2023 13:41		
0,44	40,5	4.130	113	71	47	28	17	11	8	37.5	46.9	-20,66684	-44,07656	58	31/08/2023 13:42		
0,42	41,2	4.201	181	91	47	25	16	11	8	37.6	47.0	-20,66665	-44,07652	28	31/08/2023 13:42		
0,40	42,5	4.334	96	46	28	17	11	9	9	37.7	47.5	-20,66647	-44,07642	53	31/08/2023 13:43		
0,38	39,8	4.058	173	84	49	32	20	14	10	37.7	46.5	-20,66637	-44,07627	29	31/08/2023 13:44		
0,36	40,6	4.140	145	69	42	28	19	14	9	37.9	47.9	-20,66629	-44,07606	35	31/08/2023 13:44		
0,34	39,9	4.069	194	99	53	31	20	15	11	37.9	47.9	-20,66628	-44,07587	26	31/08/2023 13:45		
0,32	40,1	4.089	195	96	60	41	27	20	13	37.9	46.4	-20,66636	-44,07566	27	31/08/2023 13:46		
0,30	40,9	4.171	174	90	54	33	23	17	12	38.0	46.0	-20,66648	-44,07551	31	31/08/2023 13:46		
0,28	42,7	4.354	169	85	48	29	19	14	10	38.0	46.8	-20,66661	-44,07537	31	31/08/2023 13:47		
0,26	43,4	4.425	139	64	33	19	12	8	7	38.2	46.0	-20,66677	-44,07525	35	31/08/2023 13:47		
0,24	41,1	4.191	175	81	32	15	11	10	8	38.1	46.4	-20,66695	-44,07516	26	31/08/2023 13:48		
0,22	41,9	4.273	99	44	23	13	9	6	5	38.4	45.1	-20,66714	-44,07508	48	31/08/2023 13:49		
0,20	40,9	4.171	96	48	28	18	12	9	7	38.3	43.9	-20,66728	-44,07498	54	31/08/2023 13:49		
0,18	41,9	4.273	133	53	25	13	12	8	7	38.6	44.6	-20,66747	-44,07490	33	31/08/2023 13:50		
0,16	41,3	4.211	147	72	29	15	10	8	8	38.5	45.2	-20,66760	-44,07475	32	31/08/2023 13:51		
0,14	39,6	4.038	121	75	45	26	16	15	9	38.6	46.6	-20,66759	-44,07460	51	31/08/2023 13:51		
0,12	41,9	4.273	126	54	25	18	12	8	7	38.6	44.1	-20,66746	-44,07444	36	31/08/2023 13:52		
0,10	42,0	4.283	114	60	28	16	11	11	10	38.7	44.7	-20,66732	-44,07434	45	31/08/2023 13:53		
0,08	40,8	4.160	158	84	36	17	10	9	8	38.6	43.7	-20,66715	-44,07423	32	31/08/2023 13:53		
0,06	41,0	4.181	111	50	21	13	12	11	10	38.7	42.8	-20,66700	-44,07413	42	31/08/2023 13:54		
0,04	40,1	4.089	170	102	54	29	17	13	12	38.7	42.9	-20,66687	-44,07399	34	31/08/2023 13:55		
0,02	40,8	4.160	120	72	40	23	14	11	10	38.7	44.4	-20,66679	-44,07382	49	31/08/2023 13:55		
0,00	40,8	4.160	119	65	38	22	14	11	10	38.8	46.7	-20,66682	-44,07360	47	31/08/2023 13:56		
												</					

	LEVANTAMENTO DEFLECTOMÉTRICO com utilização do “Falling Weight Deflectometer” (FWD) - DNER PRO 273/96		18.1-R-10-PE
			01/09/2023
			RELATÓRIO N°:
			0
			OS N°:
			0
CLIENTE:	CÂMARA MUNICIPAL ENTRE RIOS DE MINAS		
OBRA/TRECHO:	ENTRE RIOS DE MINAS/MG		
PISTA:	R. RUI BARBOSA - PISTA ESQUERDA		
SENTIDO:	AV. TIRADENTES		





DATA:	01/09/2023
RELATÓRIO N°:	0
OS N°:	0

CLIENTE:	CÂMARA MUNICIPAL ENTRE RIOS DE MINAS
OBRA/TRECHO:	ENTRE RIOS DE MINAS/MG
PISTA:	R. RUI BARBOSA - PISTA ESQUERDA
SENTIDO:	AV. TIRADENTES

